



Government of India
Ministry of Earth Sciences



India Meteorological Department

PRESS RELEASE - 1

Time of issue: 1300 hours IST

Dated: 02-04-2021

Sub: Depression over north Andaman Sea & neighbourhood

Brief History:

A low pressure area formed over southeast Bay of Bengal & neighbourhood in the early morning (0530 hours IST) of 31st March, 2021. It lay as a well marked low pressure area over central parts of Andaman Sea & neighbourhood in the afternoon (1430 hours IST) of 1st April, 2021. It concentrated into a depression over north Andaman Sea & neighbourhood in the early morning (0530 hours IST) of today, the 2nd April, 2021.

Current status:

The Depression over north Andaman Sea lay centred at 0830 hours IST of today, the 2nd April, 2021, over north Andaman Sea near latitude 11.0°N and longitude 96.3°E, about 400 km east-northeast of Port Blair (Andaman Islands), 420 km north-northwest of Phuket (Thailand) and 640 km south of Yangon (Myanmar).

It is likely to move north-northeastwards towards Myanmar coast. It is likely to intensify into a deep depression during next 12 hours.

Forecast track and intensity are given in the following table:

Date/Time(IST)	Position (Lat. °N/ long. °E)	Maximum sustained surface wind speed (Kmph)	Category of cyclonic disturbance
02.04.21/0830	11.0/96.3	45-55 gusting to 65	Depression
02.04.21/1730	11.5/96.7	50-60 gusting to 70	Deep Depression
03.04.21/0530	12.2/97.2	50-60 gusting to 70	Deep Depression
03.04.21/1730	13.1/97.4	40-50 gusting to 60	Depression

Warnings:

(i) Rainfall

- Light to moderate rainfall at many places with heavy falls at isolated places (upto 6.5- 12 cm) very likely over Andaman Islands and light to moderate rainfall at a few places over Nicobar Islands on 2nd April, 2021.

(ii) Wind warning

- Squally winds speed reaching 45-55 kmph gusting to 65 kmph very likely over Andaman Sea becoming 50-60 kmph gusting to 70 kmph from today evening till tomorrow morning. Squally winds speed reaching 45-55 kmph gusting to 65 kmph very likely over Andaman Sea during the subsequent 12 hours.
- Squally winds speed reaching 40-50 kmph gusting to 60 kmph are also very likely over and around Andaman & Nicobar Islands during next 24 hours.

(iii) Sea condition

- Sea condition will be rough to very rough over Andaman Sea on 2nd & 3rd April, 2021.

Contact: Cyclone Warning Division, Office of the Director General of Meteorology,
India Meteorological Department, Ministry of Earth Sciences.

Phone: (91) 11-24652484, FAX: (91) 11-24643128, 24623220, E-mail: cwdhq2008@gmail.com, Website: rsmcnewdelhi.imd.gov.in

Spatial rainfall distribution: Isolated: <25%, A few: 26-50%, Many: 51-75%, Most: 76-100%

Rainfall amount (mm): Heavy rain: 64.5 – 115.5, Very heavy rain: 115.6 – 204.4, Extremely heavy rain: 204.5 or more.

(iv) Impact expected

Rough to very rough Seas and squally weather with wind speed 45-55 kmph gusting to 65 kmph, affecting small vessels and fishing operations.

(v) Warnings / Advisory:

(a) Fishermen Warning

The fishermen are advised not to venture into Andaman Sea on 2nd & 3rd April, 2021.

(b) Advisory for other maritime operations

- Small ships are advised to avoid the area
- Ports along the Andaman & Nicobar Islands may take necessary pre-cautions.
- Naval base operations may maintain necessary pre-cautions
- Tourism activities may be restricted briefly over and around Andaman & Nicobar Islands.

Kindly visit www.rsmcnewdelhi.imd.gov.in and www.mausam.imd.gov.in for updates on the system.

Contact: Cyclone Warning Division, Office of the Director General of Meteorology,
India Meteorological Department, Ministry of Earth Sciences.

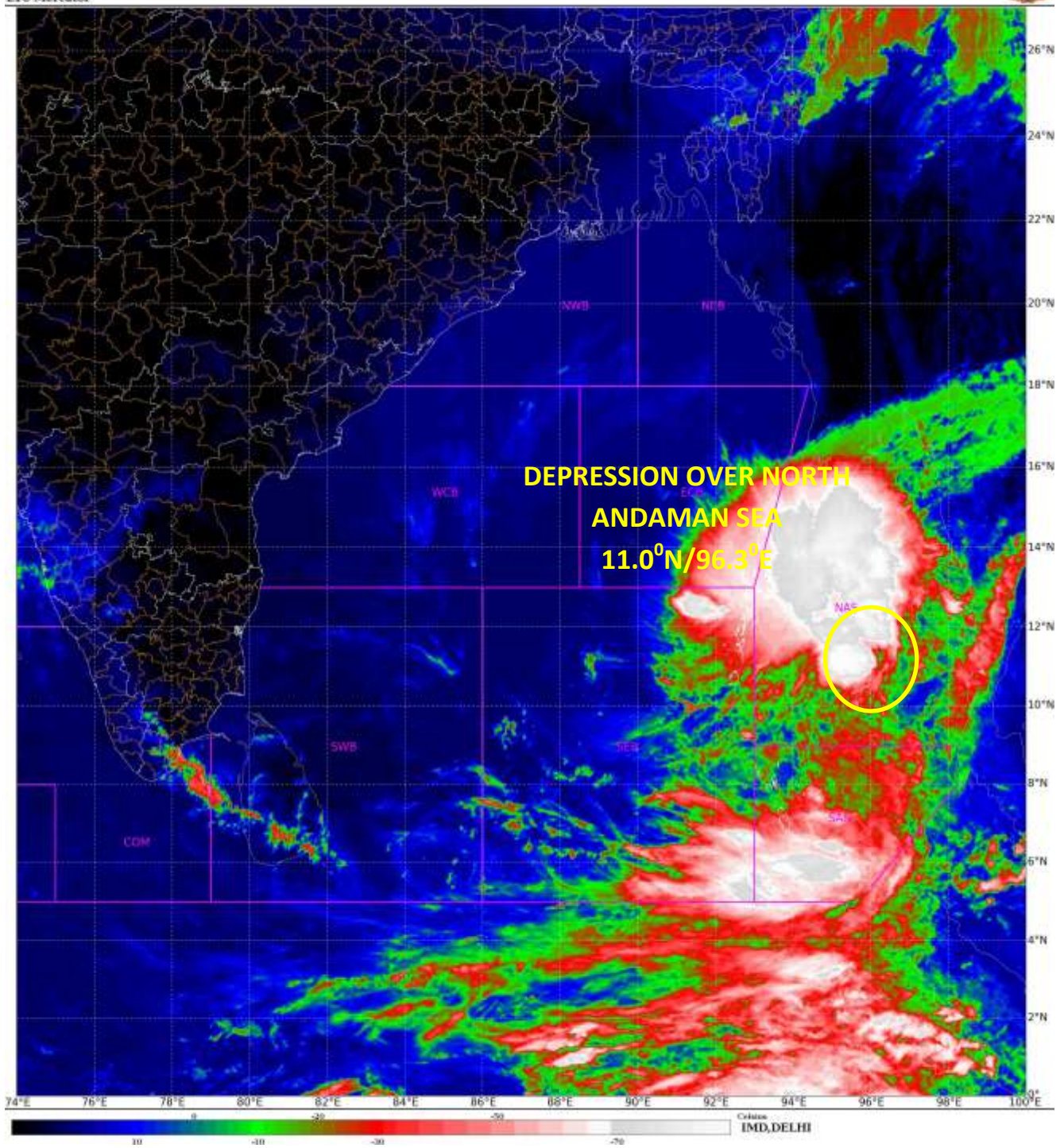
Phone: (91) 11-24652484, FAX: (91) 11-24643128, 24623220, E-mail: cwdhq2008@gmail.com, Website: rsmcnewdelhi.imd.gov.in

Spatial rainfall distribution: Isolated: <25%, A few: 26-50%, Many: 51-75%, Most: 76-100%

Rainfall amount (mm): Heavy rain: 64.5 – 115.5, Very heavy rain: 115.6 – 204.4, Extremely heavy rain: 204.5 or more.

SAT : INSAT-3DR IMG
IMG_TIR1_TEMP 10.8 um
LIC Mercator

02-04-2021/(0345 to 0412) GMT
02-04-2021/(0915 to 0942) IST



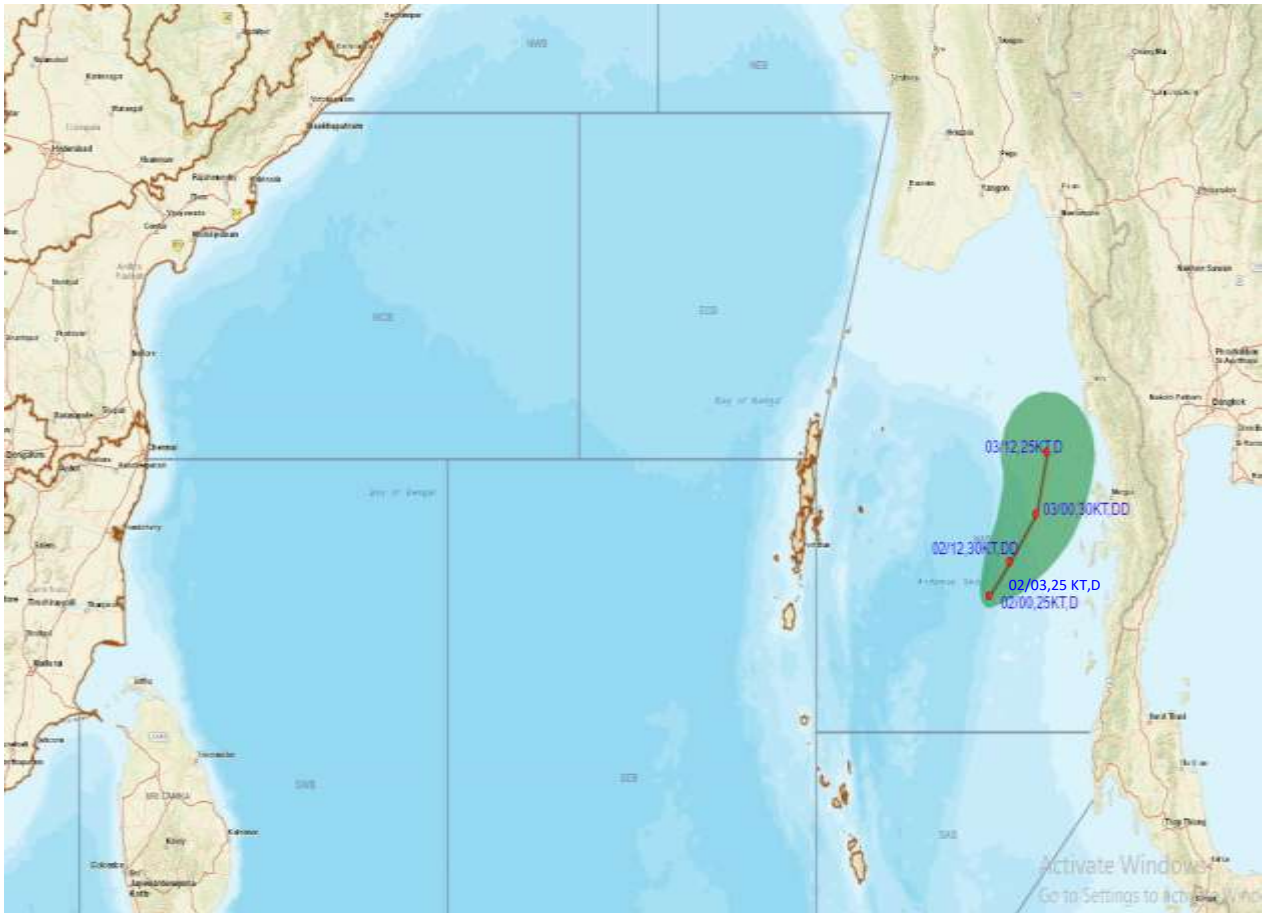
Contact: Cyclone Warning Division, Office of the Director General of Meteorology,
India Meteorological Department, Ministry of Earth Sciences.

Phone: (91) 11-24652484, FAX: (91) 11-24643128, 24623220, E-mail: cwdhq2008@gmail.com, Website: rsmcnewdelhi.imd.gov.in

Spatial rainfall distribution: Isolated: <25%, A few: 26-50%, Many: 51-75%, Most: 76-100%

Rainfall amount (mm): Heavy rain: 64.5 – 115.5, Very heavy rain: 115.6 – 204.4, Extremely heavy rain: 204.5 or more.

OBSERVED TRACK ALONGWITH CONE OF UNCERTAINTY OF DEPRESSION OVER NORTH ANDAMAN SEA BASED ON 0300 UTC OF 2ND APRIL, 2021.



DATE/TIME IN UTC

IST=UTC + 0530

L: LOW PRESSURE AREA

WML: WELL MARKED LOW PRESSURE AREA

D: DEPRESSION (17-27 KT)

DD: DEEP DEPRESSION (28-33 KT)

CS: CYCLONIC STORM (34-47 KT)


SCS: SEVERE CYCLONIC STORM (48-63KT)


VSCS: VERY SEVERE CYCLONIC STORM (64-89 KT)

ESCS: EXTREMELY SEVERE CYCLONIC STORM (90-119 KT)

SuCS: SUPER CYCLONIC STORM (≥ 20 KT)


 **LESS THAN 34 KT**

 **34-47 KT**

 **≥ 48 KT**

 **OBSERVED TRACK**

 **FORECAST TRACK**

 **CONE OF UNCERTAINTY**

Contact: Cyclone Warning Division, Office of the Director General of Meteorology,

India Meteorological Department, Ministry of Earth Sciences.

Phone: (91) 11-24652484, FAX: (91) 11-24643128, 24623220, E-mail: cwdhq2008@gmail.com, Website: rsmcnewdelhi.imd.gov.in

Spatial rainfall distribution: Isolated: <25%, A few: 26-50%, Many: 51-75%, Most: 76-100%

Rainfall amount (mm): Heavy rain: 64.5 – 115.5, Very heavy rain: 115.6 – 204.4, Extremely heavy rain: 204.5 or more.



OBSERVED AND FORECAST TRACK ALONGWITH QUADRANT WIND DISTRIBUTION OF DEPRESSION OVER NORTH ANDAMAN SEA BASED ON 0300 UTC OF 2ND APRIL, 2021



DATE/TIME IN UTC

IST-UTC + 0530

L: LOW PRESSURE AREA

WML: WELL MARKED LOW PRESSURE AREA

D: DEPRESSION (17-27 KT)

DD: DEEP DEPRESSION (28-33 KT)

CS: CYCLONIC STORM (34-47 KT)

SCS: SEVERE CYCLONIC STORM (48-63KT)

VSCS: VERY SEVERE CYCLONIC STORM (64-89 KT)

ESCS: EXTREMELY SEVERE CYCLONIC STORM (90-119 KT)

SuCS: SUPER CYCLONIC STORM (≥ 120 KT)

● LESS THAN 34 KT

○ 34-47 KT

● ≥ 48 KT

— OBSERVED TRACK

— FORECAST TRACK

— CONE OF UNCERTAINTY

AREA OF MAXIMUM SUSTAINED WIND SPEED:

■ 28-33 KT (52-61 KMPH)

■ 34-49 KT (62-91 KMPH)

■ 50-63 KT (92-117 KMPH)

■ ≥ 64 KT (≥ 118 KMPH)

IMPACT OVER THE SEA

MSW (knot/kmph)	Impact	Action
28-33 (52-61)	Very rough seas	Total suspension of fishing operations
34-49 (62-91)	High to very high seas	Total suspension of fishing operations
50-63 (92-117)	Very high seas	Total suspension of fishing operations
≥ 64 (≥ 118)	Phenomenal	Total suspension of fishing operations

Contact: Cyclone Warning Division, Office of the Director General of Meteorology, India Meteorological Department, Ministry of Earth Sciences.

Phone: (91) 11-24652484, FAX: (91) 11-24643128, 24623220, E-mail: cwdhq2008@gmail.com, Website: rsmcnewdelhi.imd.gov.in

Spatial rainfall distribution: Isolated: <25%, A few: 26-50%, Many: 51-75%, Most: 76-100%

Rainfall amount (mm): Heavy rain: 64.5 – 115.5, Very heavy rain: 115.6 – 204.4, Extremely heavy rain: 204.5 or more.